

# MAESTRO ENGG FABS

REPUTED FORGING, FABRICATION & EQUIPMENTS MANUFACTURING COMPANY IN BHILAI

Mobile No. : 9826105295, 9584437704

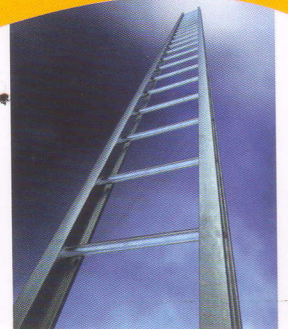
E-mail : [maestroenggfab@rediffmail.com](mailto:maestroenggfab@rediffmail.com)

Website : <http://www.maestroenggfabs.com>

GSTIN No. : 22AOHPG1881J1Z1

IMPORT EXPORT CODE No. : 6313000579





## OUR PRODUCTS

- Forgings as per drawing
- Crane Wheels
- Wheel & Axles
- Chain Link Assembly
- Gear & Pinion Shaft
- Gears & Flanges
- Forged Rings
- Gear Coupling & Cross Coupling
- Conveyor Pulleys
- Fabrication equipment as per drawing

## OUR MISSION

The company has a sole mission to become a trust worthy and reliable fabrication, supplier and exporter catering to customers from varied industrial segments since our emergence in the industry. We have been continuously striving to achieve our mission by engineering equipment and offering flawless contract fabrication services. Presently we are providing our services in all over INDIA .

## OUR STRENGTH

- Expertise in customized product development
- The finest range of products at highly competitive prices.
- Opportunity for light quality fabrication
- Facility for fabrication and assembly combination
- Work as per customer's requirement
- Customer oriented attitude
- Resourceful Vendors
- Guaranteed on time delivery





## OUR VALUED CUSTOMERS

Ever since our inception, we have been fulfilling the changing, challenging and growing demands of the markets by machining, fabricating, manufacturing as per customers requirement. Some of the worth mentioning customers, we have been serving are listed as below:-

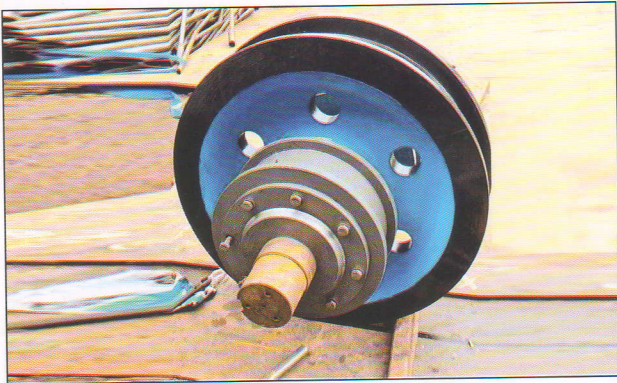
- ➔ SAIL- BHILAI STEEL PLANT
- ➔ TOPWORTH STEEL & PVT. LTD.
- ➔ CREST STEEL & POWER PVT. LTD.
- ➔ GODAWARI POWER & ISPAT PVT. LTD.
- ➔ RR ISPAT & POWER LTD.
- ➔ REAL ISPAT & POWER LTD.
- ➔ API ISPAT
- ➔ DALMIA BHARAT REFRACTORIES LTD.
- ➔ KSK MAHANADI POWER COMPANY LTD.
- ➔ VANDANA ISPAT
- ➔ ROYAL INFRACONSTRU LTD.
- ➔ MAHENDRA SPONGE & POWER LTD.
- ➔ AGRASEN RE-ROLLERS
- ➔ JAGDISH ISPAT

## OUR GOAL

Customer satisfaction is the ultimate goal ,by offering on upgrade & improved varieties of our product with zero defects and to increase the quality while lowering per unit cost to the end user also render the regular customer oriented pre and post sales services. Maestro Engg Fabs Works as a partner to solve all your steel problems and create solutions . Our goal is to be more successful.



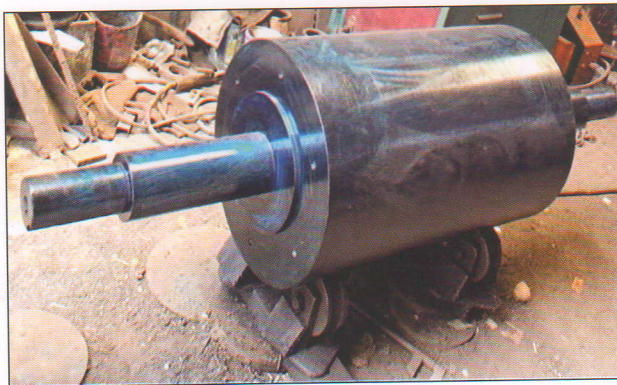
## SOME OF THE ITEMS MANUFACTURED AT OUR END



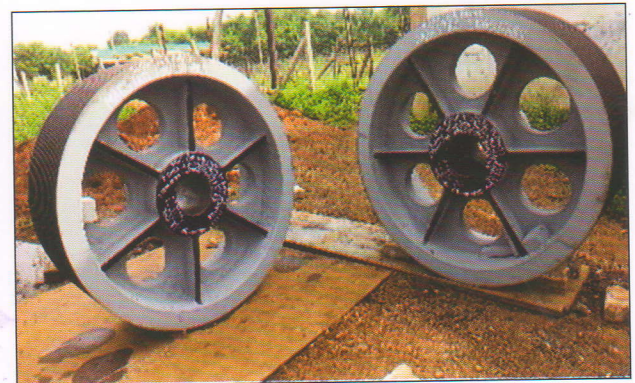
**WHEEL ASSEMBLY**



**WHEEL ASSEMBLY**



**ROLL ASSEMBLY**



**PULLEY**



**SHAFTS**



**BEARING BLOCKS**



**SOME OF THE ITEMS MANUFACTURED AT OUR END**



**SPARES FOR STEEL PLANT**



**STUD FOR GIRTH GEAR**



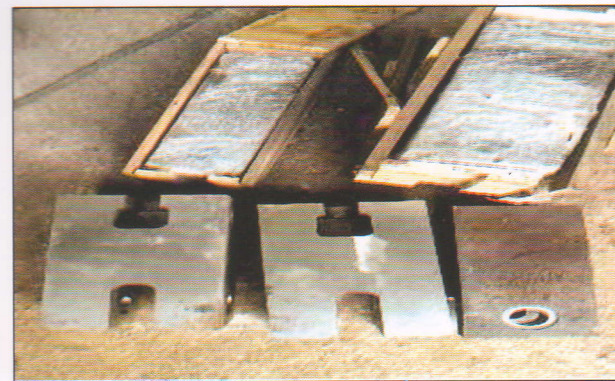
**GEAR**



**SPARES FOR STEEL PLANT**



**SPARES FOR STEEL PLANT**



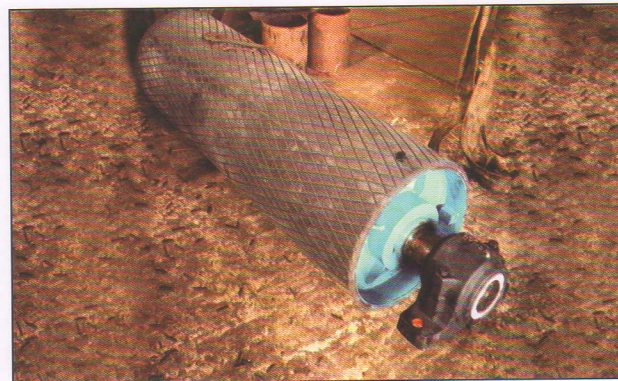
**DUMMY BAR HEAD**



## SOME OF THE ITEMS MANUFACTURED AT OUR END



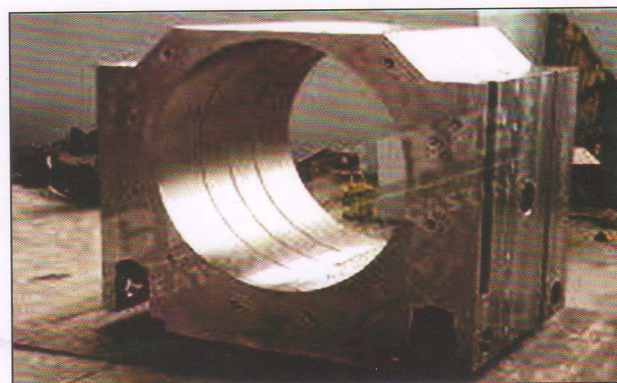
**BOTTOM BLOCK PULLEY ASSEMBLY**



**TAIL PULLEY & SNUB PULLEY  
WITH RUBBER LAGGING**



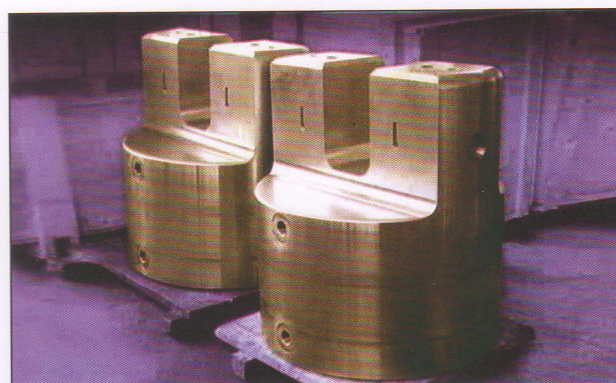
**CHAIR PAD FOR 350 TPD KILN**



**BEARING CHOCK**



**CROSS COUPLING**



**UNIVERSAL COUPLING**



## SOME OF THE ITEMS MANUFACTURED AT OUR END



FABRICATED DUCT



BLACK FORGING  
FOR CRANE WHEEL



CRANE WHEEL  
UPTO DIA 500MM



BEARING BLOCK



ROLLER  
FOR STEEL PLANT



DRIVE AND NON DRIVE  
WHEEL



FABRICATED KILN



# MAESTRO ENGG FABS

REPUTED FORGING, FABRICATION & EQUIPMENTS MANUFACTURING COMPANY IN BHILAI

## CONTACT US



**Office & Factory :** Ward-13, Opp. M.R.S School,  
Lavkush Nagar, ACC Jamul, Bhilai (C.G).



**Mobile No. :** 9826105295, 9584437704



**Email :** maestroenggfab@rediffmail.com



**Web :** <http://www.maestroenggfabs.com>

